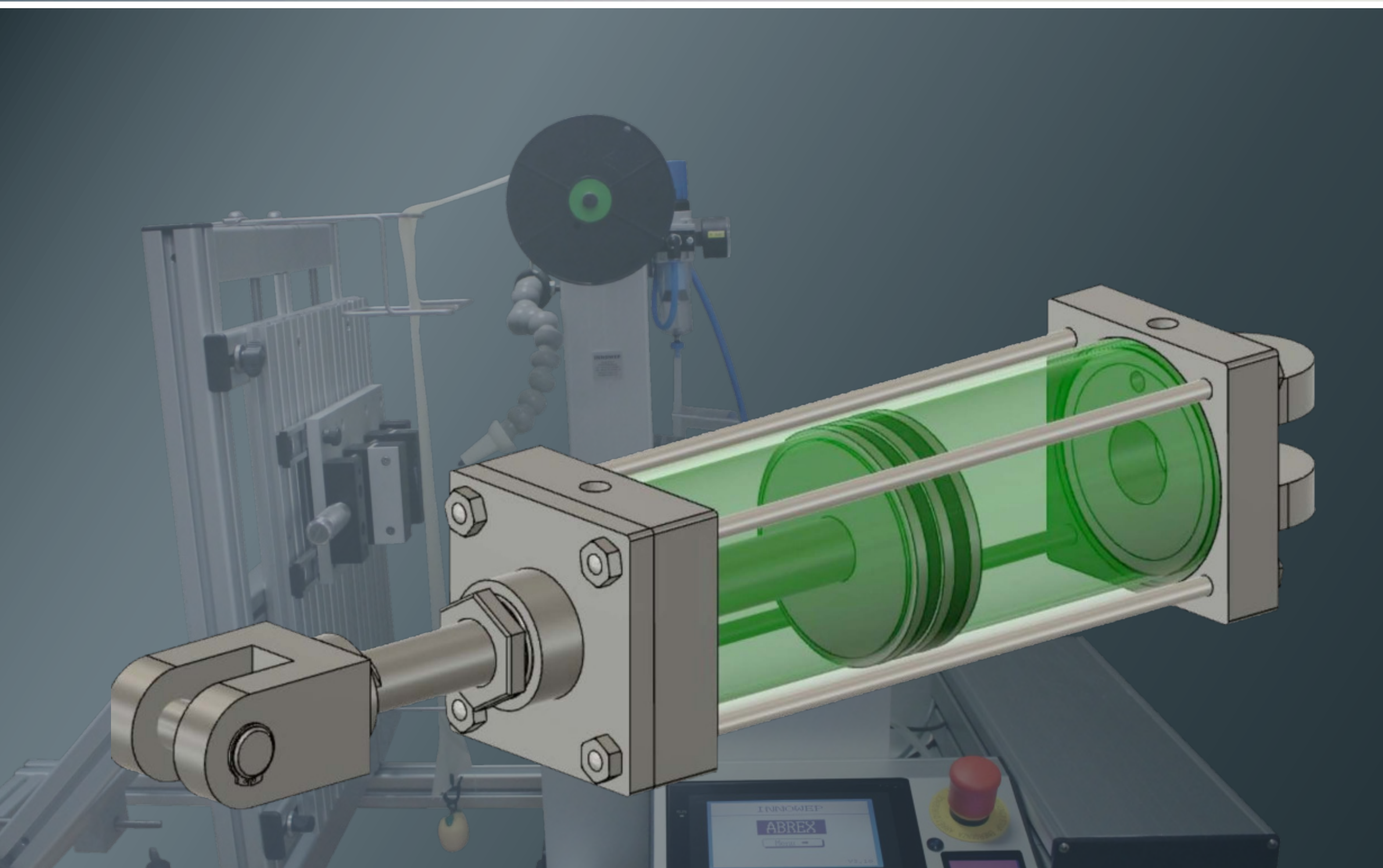
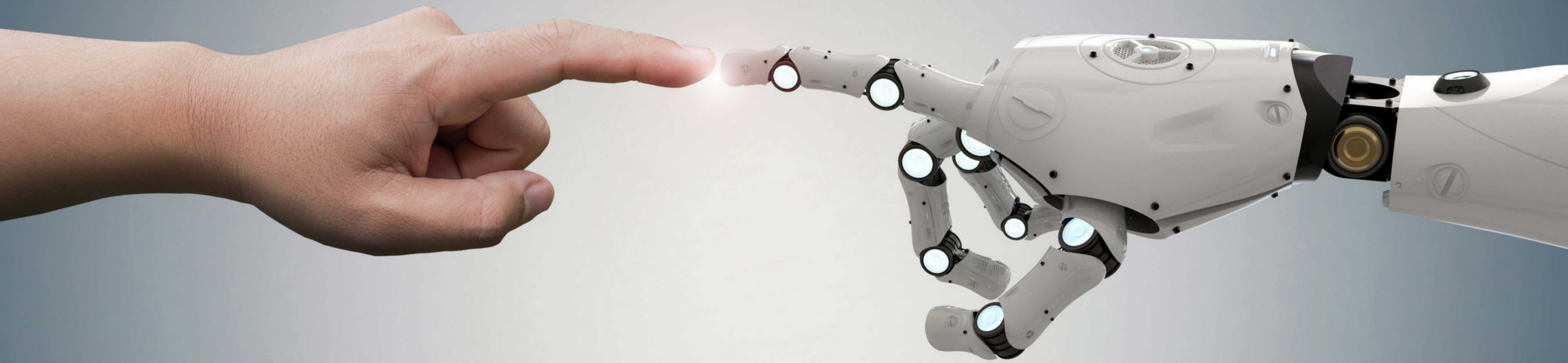


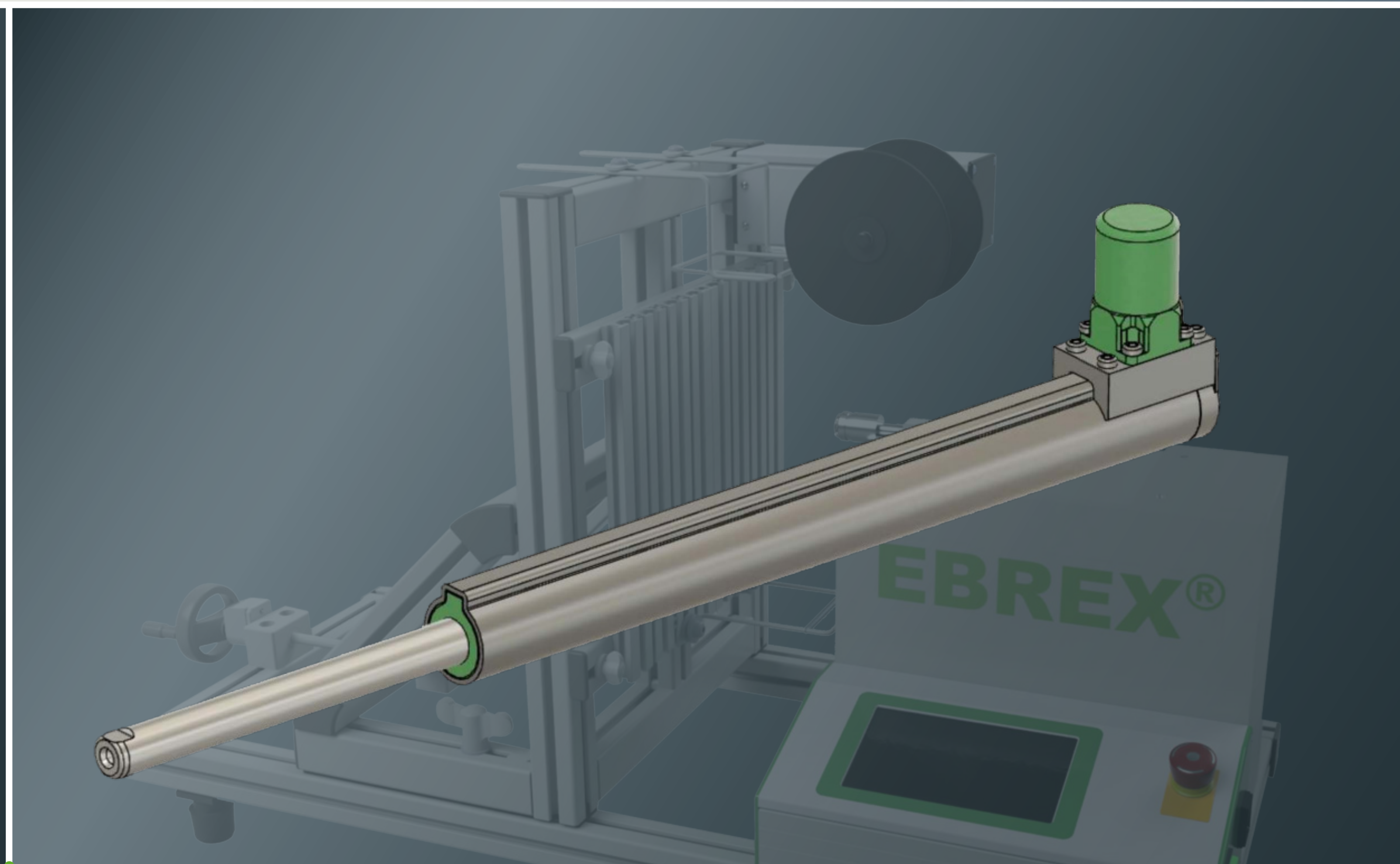
Human Touch vs. Robot Touch



Human Fingertip Touch Simulation with Pneumatic Drive System

- Provide dynamic, non-linear movement
- 99% simulation providing the same wear pattern as the one from the field
- Feasible air-blow function to avoid unnecessary abrasive

Recommended Model: ABREX®



Robot Finger Touch Simulation with non-Pneumatic Drive System

- Provide linear and constant speed
- Perform tribological material testing
- Provide high speed performance
- No air supply required

Recommended Model: EBREX®

INNOWEP GmbH
Measuring & Testing
Haugerring 6, 97070 Würzburg
Tel.: +49 931 32298-0
Fax: +49 931 32298-12
info@innowep.com

24/7 Support worldwide 

INNOWEP GmbH
MEASURING & TESTING

www.innowep.com